



Cotton Seed Oil Cake

MARKET MOVEMENT

MCX MARKET

Commodity	Open	High	Low	Close	Rs. Chg	% Chg	Op Int	% Chng Oi	Volume
COTTON 30JUN2021	24490.00	24560.00	23960.00	24220.00	-280.00	-1.14	4729	-7.80	2160.00
COTTON 30JUL2021	24780.00	24810.00	24220.00	24480.00	-280.00	-1.13	3184	18.58	1084.00
COTTON 31AUG2021	24750.00	24750.00	24480.00	24540.00	-260.00	-1.05	18	350.00	18.00
KAPAS 29APR2022	1330.00	1330.00	1305.00	1311.50	-21.50	-1.61	9	0.00	9.00

NCDEX MARKET

COCUDAKL 20JUL2021	2969.00	2992.00	2929.00	2943.00	-31.00	-1.04	74330	2.78	41620.00
COCUDAKL 20AUG2021	3043.00	3067.00	3010.00	3016.00	-33.00	-1.08	3250	7.97	630.00
COCUDAKL 20SEP2021	0.00	0.00	0.00	0.00	0.00	0.00	0	0.00	0.00
KAPAS 29APR2022	1332.50	1332.50	1306.00	1322.00	-10.00	-0.75	325	-5.80	168.00

ICE MARKET (Intercontinental Exchange)

Commodity	Open	High	Low	Close	Rs. Chg	% Chg	Volume	Spread
CTN21 (Jul '21)	87.20	87.50	87.20	87.44	0.08	0.09	375	
CTV21 (Oct '21)	88.66	89.37	87.88	89.26	1.08	1.22	11	1.82
CTH22 (Mar '22)	88.00	88.20	87.95	88.17	0.10	0.11	35	-1.09

ZCE MARKET (Zhengzhou Commodity Exchange)

WQN21 (Jul '21)	15845.00	15870.00	15700.00	15780.00	-95.00	-0.60	372	
WQU21 (Sep '21)	16030.00	16065.00	15865.00	15965.00	-40.00	-0.25	219737	185.00
WQX21 (Nov '21)	16230.00	16240.00	16055.00	16150.00	-60.00	-0.37	19053	185.00

CURRENCY MARKET

Commodity	Open	High	Low	Close	Rs. Chg	% Chg	Op Int	% Chng Oi	Volume
USDINR 28JUN2021	73.09	73.26	73.06	73.20	0.10	0.14	2402508	0.30	1385731.00
USDINR 28JUL2021	73.34	73.50	73.32	73.45	0.10	0.14	459687	5.52	167386.00
USDINR 27AUG2021	73.60	73.76	73.57	73.72	0.13	0.17	151739	2.15	34876.00

Calendar Spreads Snapshot

Commodity	Spread	P. Spread	Change
COTTON JUL - JUN	260.00	260.00	0.00
COTTON AUG - JUL	60.00	40.00	20.00
COTTON AUG - JUN	320.00	300.00	20.00
COCUDAKL AUG - JUL	73.00	75.00	-2.00
COCUDAKL SEP - AUG	-3016.00	-3049.00	33.00
COCUDAKL SEP - JUL	-2943.00	-2974.00	31.00

Open Interest Snapshot

Commodity	Last	OI	Status
COTTON 30JUN2021	24220	4729	Long Liquidation
COTTON 30JUL2021	24480	3184	Fresh Selling
COTTON 31AUG2021	24540	18	Fresh Selling
COCUDAKL 20JUL2021	2943	74330	Fresh Selling
COCUDAKL 20AUG2021	3016	3250	Fresh Selling
COCUDAKL 20SEP2021	0	0	Long Liquidation

Commodity Market Daily Trading Levels

MCX MARKET

Commodity	Close	Support 3	Support 2	Support 1	Pivot Point	Resist 1	Resist 2	Resist 3	Trend
COTTON 30JUN2021	24220.00	23340.00	23650.00	23940.00	24250.00	24540.00	24850.00	25140.00	Negative
COTTON 30JUL2021	24480.00	23600.00	23910.00	24190.00	24500.00	24780.00	25090.00	25370.00	Negative
COTTON 31AUG2021	24540.00	24160.00	24320.00	24430.00	24590.00	24700.00	24860.00	24970.00	Negative
KAPAS 29APR2022	1311.50	1277.00	1291.00	1302.00	1316.00	1327.00	1341.00	1352.00	Negative

NCDEX MARKET

COCUDAKL 20JUL2021	2943.00	2855.00	2892.00	2918.00	2955.00	2981.00	3018.00	3044.00	Negative
COCUDAKL 20AUG2021	3016.00	2938.00	2974.00	2995.00	3031.00	3052.00	3088.00	3109.00	Negative
COCUDAKL 20SEP2021	0.00	0.00	0.00	0.00	0.00	0.00	0.00	0.00	Range
KAPAS 29APR2022	1322.00	1282.00	1294.00	1308.00	1320.00	1334.00	1346.00	1360.00	Negative

ICE MARKET

CTN21 (Jul '21)	87.44	86.80	87.00	87.10	87.30	87.40	87.60	87.70	Positive
CTV21 (Oct '21)	89.26	86.41	87.15	87.90	88.64	89.39	90.13	90.88	Positive
CTH22 (Mar '22)	88.17	87.65	87.80	87.90	88.05	88.15	88.30	88.40	Positive

ZCE MARKET

WQN21 (Jul '21)	15780.00	15570.00	15635.00	15740.00	15805.00	15910.00	15975.00	16080.00	Negative
WQU21 (Sep '21)	15965.00	15708.33	15786.67	15908.33	15986.67	16108.33	16186.67	16308.33	Negative
WQX21 (Nov '21)	16150.00	15925.00	15990.00	16110.00	16175.00	16295.00	16360.00	16480.00	Negative

CURRENCY MARKET

USDINR 28JUN2021	73.20	72.90	72.98	73.09	73.17	73.28	73.36	73.47	Positive
USDINR 28JUL2021	73.45	73.16	73.24	73.34	73.42	73.52	73.60	73.70	Positive
USDINR 27AUG2021	73.72	73.41	73.49	73.60	73.68	73.79	73.87	73.98	Positive

Spot Rate Update

10-Jun-21

Commodity	Rate
Cotton Seed Oil-Cake-Amravati	3000 - 3000
Cotton Seed Oil-Cake-Beed	3050 - 3250
Cotton Seed Oil-Cake-Jalgaon	3000 - 3200
Cotton Seed Oil-Cake-Khamgaon	3600 - 3800
Cotton Seed Oil-Cake-Arvi	3050 - 3300

Spot Rate Update

10-Jun-21

Commodity	Rate
Cotton Seed Oil-Cake-Nagpur	3400 - 3500
Cotton Seed Oil-Cake-Murtajapur	3550 - 3750
Cotton Seed Oil-Cake-Khamgaon	3600 - 3800
Cotton Seed Oil-Cake-Arvi	3050 - 3300
Cotton Seed Oil-Cake-Akot	3050 - 3300

MCX COTTON

Technical Chart



Open	High	Low	Close	Net Cng
24490.00	24560.00	23960.00	24220.00	-280.00
OI	% OI	Volume	Trend	% Cng
4729.00	-7.80	2160.00	Negative	-1.14

Fundamentals

Cotton yesterday settled down by -1.14% at 24220 on profit booking after prices gained amid prospects of higher exports and falling supply in physical markets. Cotton sowing area grows despite of delays. Despite sowing of cotton stretching beyond the ideal sowing time in Punjab, it is close to reaching the target for 2021-22. The state agriculture department had the target of sowing cotton on 3.25 lakh hectares the crop had been sown over 3.01 lakh hectares. New figures show global cotton stock levels are set to increase to 22m tonnes by the end of 2020/21 as the stocks-to-use ratio declines. According to the latest update from the International Cotton Advisory Committee (ICAC), China's stocks, however, are expected to decline as the rest of the world's expands slightly. Cotton consumption is expected to increase by 2% to 25.3m tonnes as the global economy continues to recover. Decreases in Brazil, India and the US have caused a reduction in the 2020/21 global production estimate but cotton production — along with consumption and trade — are all expected to increase in 2021/22: Production is expected to increase by 5% to 25.5m tonnes, with increases in planted areas in the US and West Africa. In spot market, Cotton gained by 100 Rupees to end at 24540 Rupees. Technically market is under long liquidation as market has witnessed drop in open interest by -7.8% to settled at 4729 while prices down -280 rupees, now Cotton is getting support at 23940 and below same could see a test of 23650 levels, and resistance is now likely to be seen at 24540, a move above could see prices testing 24850.

Trading Idea for the day

Cotton trading range for the day is 23650-24850.

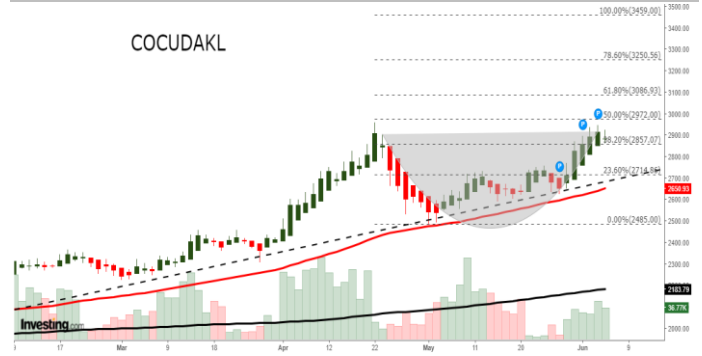
Cotton dropped on profit booking after prices gained amid prospects of higher exports and falling supply in physical markets

Cotton stock levels are set to increase to 22m tonnes by the end of 2020/21

According to the latest update from the ICAC, China's stocks, however, are expected to decline as the rest of the world's expands slightly.

NCDEX COCUDAKL

Technical Chart



Open	High	Low	Close	Net Cng
2969.00	2992.00	2929.00	2943.00	-31.00
OI	% OI	Volume	Trend	% Cng
74330.00	2.78	41620.00	Negative	-1.04

Fundamentals

Cocudakl yesterday settled down by -1.04% at 2943 on profit booking after prices seen supported as Cottonseed production and quality were affected last year due to excessive rains in the key producing State of Telangana and some parts of Tamil Nadu. Support also seen amid prospects of higher exports and falling supply in the physical market. However there were worries of lockdown it is anticipated that there will be slow supply and same with demand. 2021/22 global cottonseed production is projected at nearly 44 million tons, up 5 percent from the current year. Higher forecasts for the United States, Brazil, Australia, and Mali are partially offset by declines in China. U.S. production is forecast up 781,000 tons to nearly 5 million. Waning arrivals of raw cotton due to the fag end of the season and limited stocks of cottonseed with ginners has led to a supply crunch in the market. India has produced around 36 mln bales in the ongoing 2020-21 (Oct-Sep) season, of which nearly 33 mln bales, or 92% of the stock, has already arrived in the market. Considering firm demand outlook for the commodity, the tight supply situation in cottonseed is expected to continue in the coming months as well as the new season for cotton will start only in October. In Akola spot market, Cocudakl dropped by -12.8 Rupees to end at 2951.4 Rupees per 100 kgs. Technically market is under fresh selling as market has witnessed gain in open interest by 2.78% to settled at 74330 while prices down -31 rupees, now Cocudakl is getting support at 2918 and below same could see a test of 2892 levels, and resistance is now likely to be seen at 2981, a move above could see prices testing 3018.

Trading Idea for the day

Cocudakl trading range for the day is 2892-3018.

Cocudakl dropped on profit booking after prices remained supported as Cottonseed production and quality were affected

However there were worries of lockdown it is anticipated that there will be slow supply and same with demand.

2021/22 global cottonseed production is projected at nearly 44 million tons, up 5 percent from the current year.

COTTON PRICE MOVEMENT SINCE 2012

Year	Harvesting					Sowing	Growth						Harvesting	Crop Calendar
	JAN	FEB	MAR	APR	MAY	JUN	JUL	AUG	SEP	OCT	NOV	DEC		
2012	17420.00 3.75	17080.00 -1.95	17540.00 2.69	16490.00 -5.99	15670.00 -4.97	16430.00 4.85	17750.00 8.03	17990.00 1.35	16050.00 -10.78	16140.00 0.56	16050.00 -0.56	16220.00 1.06	-570.00 -3.39	
2013	16360.00 0.86	17620.00 7.70	19330.00 9.70	17930.00 -7.24	18230.00 1.67	19330.00 6.03	20160.00 4.29	22690.00 12.55	21760.00 -4.10	20570.00 -5.47	18400.00 -10.55	19340.00 5.11	3120.00 19.24	
2014	20490.00 5.95	20180.00 -1.51	20280.00 0.50	20560.00 1.38	19920.00 -3.11	20250.00 1.66	18980.00 -6.27	17970.00 -5.32	16540.00 -7.96	15890.00 -3.93	15810.00 -0.50	15870.00 0.38	-3470.00 -17.94	
2015	14490.00 -8.70	15200.00 4.90	15290.00 0.59	16320.00 6.74	16520.00 1.23	16250.00 -1.63	16170.00 -0.49	16310.00 0.87	15780.00 -3.25	15580.00 -1.27	15770.00 1.22	16340.00 3.61	470.00 2.96	
2016	16260.00 -0.49	16110.00 -0.92	15750.00 -2.23	16740.00 6.29	17730.00 5.91	20080.00 13.25	22490.00 12.00	19610.00 -12.81	19840.00 1.17	18570.00 -6.40	18880.00 1.67	19020.00 0.74	2680.00 16.40	
2017	20290.00 6.68	20690.00 1.97	20900.00 1.01	20600.00 -1.44	20500.00 -0.49	20230.00 -1.32	20390.00 0.79	18650.00 -8.53	18530.00 -0.64	18440.00 -0.49	18210.00 -1.25	19710.00 8.24	690.00 3.63	
2018	20050.00 1.73	20640.00 2.94	20430.00 -1.02	20720.00 1.42	22060.00 6.47	22350.00 1.31	24120.00 7.92	22860.00 -5.22	21840.00 -4.46	22250.00 1.88	21390.00 -3.87	21090.00 -1.40	1380.00 7.00	
2019	20980.00 -0.52	20480.00 -2.38	21490.00 4.93	22460.00 4.51	21770.00 -3.07	21540.00 -1.06	20750.00 -3.67	19570.00 -5.69	19870.00 1.53	19320.00 -2.77	19230.00 -0.47	19570.00 1.77	-1520.00 -7.21	
2020	19410.00 -0.82	18200.00 -6.23	16230.00 -10.82	16350.00 0.74	15810.00 -3.30	15760.00 -0.32	16320.00 3.55	17730.00 8.64	18210.00 2.71	19430.00 6.70	20170.00 3.81	20630.00 2.28	1060.00 5.42	
2021	20950.00 1.55	21890.00 4.49	21410.00 -2.19	21880.00 2.20	23590.00 7.82								2960.00 14.35	
Average	1.00	0.90	0.32	0.86	0.81	2.53	2.91	-1.57	-2.86	-1.24	-2.19	2.23	Average	

COCUDAKL PRICE MOVEMENT SINCE 2012

	JAN	FEB	MAR	APR	MAY	JUN	JUL	AUG	SEP	OCT	NOV	DEC	Growth
2012	1288.00 3.70	1216.00 -5.59	1383.00 13.73	1269.00 -8.24	1119.00 -11.82	1279.00 14.30	1528.00 19.47	1527.00 -0.07	1328.00 -13.03	1437.00 8.21	1397.00 -2.78	1379.00 -1.29	137.00 11.03
2013	1321.00 -4.21	1469.00 11.20	1523.00 3.68	1408.00 -7.55	1572.00 11.65	1523.00 -3.12	1568.00 2.95	1833.00 16.90	1470.00 -19.80	1494.00 1.63	1400.00 -6.29	1474.00 5.29	95.00 6.89
2014	1529.00 3.73	1522.00 -0.46	1465.00 -3.75	1572.00 7.30	1493.00 -5.03	1676.00 12.26	1670.00 -0.36	1723.00 3.17	1368.00 -20.60	1358.00 -0.73	1331.00 -1.99	1422.00 6.84	-52.00 -3.53
2015	1446.00 1.69	1524.00 5.39	1707.00 12.01	1798.00 5.33	1828.00 1.67	1798.00 -1.64	1953.00 8.62	2043.00 4.61	1560.00 -23.64	1657.00 6.22	1712.00 3.32	2085.00 21.79	663.00 46.62
2016	2038.00 -2.25	2209.00 8.39	2236.00 1.22	2296.00 2.68	2334.00 1.66	2548.00 9.17	2576.00 1.10	2600.00 0.93	1971.00 -24.19	1909.00 -3.15	1960.00 2.67	2012.00 2.65	-73.00 -3.50
2017	2268.00 12.72	2301.00 1.46	2168.00 -5.78	2014.00 -7.10	1848.00 -8.24	1652.00 -10.61	1477.00 -10.59	1560.00 5.62	1519.00 -2.63	1507.00 -0.79	1629.50 8.13	1792.50 10.00	-219.50 -10.91
2018	1742.50 -2.79	1569.00 -9.96	1405.00 -10.45	1196.00 -14.88	1359.50 13.67	1570.50 15.52	1852.50 17.96	1668.00 -9.96	1660.00 -0.48	1794.00 8.07	1907.00 6.30	1926.00 1.00	133.50 7.45
2019	2045.50 6.20	1936.00 -5.35	2281.00 17.82	2486.00 8.99	2788.00 12.15	2767.00 -0.75	3338.00 20.64	3251.00 -2.61	2135.00 -34.33	2280.50 6.81	1974.00 -13.44	2139.00 8.36	213.00 11.06
2020	1783.00 -16.64	1598.00 -10.38	2064.00 29.16	1905.00 -7.70	1949.00 2.31	1961.00 0.62	1775.00 -9.48	1880.00 5.92	1806.00 -3.94	1851.00 2.49	2164.00 16.91	2003.00 -7.44	-136.00 -6.36
2021	2079.00 3.79	2220.00 6.78	2388.00 7.57	2522.00 5.61	2755.00 9.24								752.00 37.54
Average	1.81	0.59	5.62	-1.97	2.56	4.23	5.91	2.82	-16.01	3.66	0.71	5.76	Average

KEDIA ADVISORY

KEDIA STOCKS & COMMODITIES RESEARCH PVT LTD.
Mumbai. INDIA.

For more details, please contact:

Mobile: +91 9323406035 / 9320096333 / 9619551022

Email: info@kediaadvisory.com

URL: www.kediaadvisory.com

SEBI REGISTRATION NUMBER - INH000006156

General Disclaimers: This Report is prepared and distributed by Kedia Stocks & Commodities Research Pvt Ltd. for information purposes only. The recommendations, if any, made herein are expression of views and/or opinions and should not be deemed or construed to be neither advice for the purpose of purchase or sale through KSCRPL nor any solicitation or offering of any investment /trading opportunity. These information / opinions / views are not meant to serve as a professional investment guide for the readers. No action is solicited based upon the information provided herein. Recipients of this Report should rely on information/data arising out of their own investigations. Readers are advised to seek independent professional advice and arrive at an informed trading/investment decision before executing any trades or making any investments. This Report has been prepared on the basis of publicly available information, internally developed data and other sources believed by KSCRPL to be reliable. KSCRPL or its directors, employees, affiliates or representatives do not assume any responsibility for, or warrant the accuracy, completeness, adequacy and reliability of such information / opinions / views. While due care has been taken to ensure that the disclosures and opinions given are fair and reasonable, none of the directors, employees, affiliates or representatives of KSCRPL shall be liable for any direct, indirect, special, incidental, consequential, punitive or exemplary damages, including lost profits arising in any way whatsoever from the information / opinions / views contained in this Report. The possession, circulation and/or distribution of this Report may be restricted or regulated in certain jurisdictions by appropriate laws. No action has been or will be taken by KSCRPL in any jurisdiction (other than India), where any action for such purpose(s) is required. Accordingly, this Report shall not be possessed, circulated and/ or distributed in any such country or jurisdiction unless such action is in compliance with all applicable laws and regulations of such country or jurisdiction. KSCRPL requires such recipient to inform himself about and to observe any restrictions at his own expense, without any liability to KSCRPL. Any dispute arising out of this Report shall be subject to the exclusive jurisdiction of the Courts in India.